



MARCUS PEDERSEN

AIRPORT INTERIOR SOLUTIONS



BAG DROP & CHECK-IN | SECURITY CHECKPOINTS | FURNITURE & ACCESSORIES





ABOUT MARCUS PEDERSEN

WHO ARE WE?

Marcus Pedersen is a Danish design company specialised in designing, developing and manufacturing products and furniture for airports and public areas. Our solutions are characterised by high quality, aesthetics, and functionality that corresponds with the modern user's needs.

All our products are manufactured in Denmark with respect for the environment.

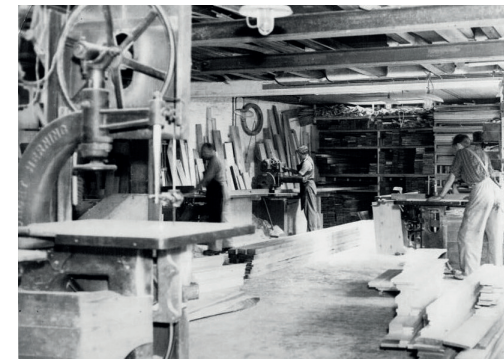
OUR APPROACH

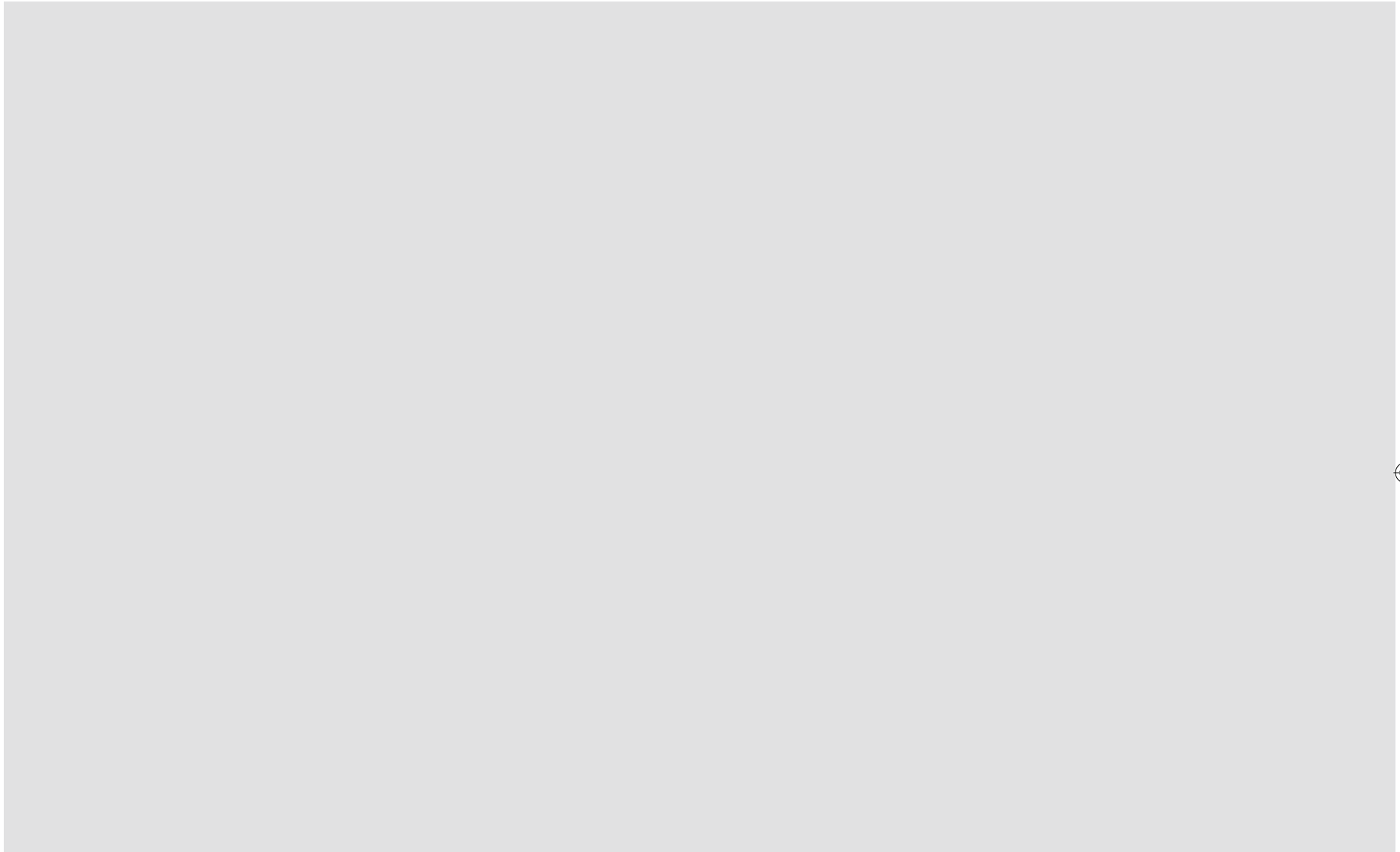
We work in the cross field between design, engineering and craftsmanship, where the capabilities are represented by a young, multidisciplinary team. We believe in a user-centered design process, and we always involve the end users in our projects – from research to prototype testing.

THE COMPANY'S HISTORY

The roots of the company go back to 1907, when Marcus Pedersen started the company in Aalborg, Denmark. The company was known for carpentry work of a very high quality.

In 2012, Niels Marcus Pedersen took over the company as the fourth generation, and he now leads the company with many of the same ideas about products and quality that were born more than 100 years ago.







BAG DROP & CHECK- IN





AIR.GO 2.0 BAG DROP

DESIGN: SARA CLEMENT (2015)

Air.Go 2.0 is an innovative self-service bag drop solution. Not two airports have the same needs, and Air.Go 2.0 is designed as a modular system for easy customisation and integration.

Air.Go 2.0 is installed directly on the floor, and does not require a wall for installation. It comes with an optional tray dispenser and glass walls, and has many possibilities for integration of intrusion detection and physical barriers.

The Air.Go series is characterised by a minimalistic and elegant design with no distracting elements; functionally as well as aesthetically. The gently curved front gives a welcoming appearance with an ergonomically correctly angled screen and space for passengers to get close to the screen for reading and touching.

MATERIALS

Front: Powder coated steel (all colours available, can be covered in foil with graphics)

Sides: Brushed stainless steel

PARTNER



MARCUS PEDERSEN 7

© Marcus Pedersen 2015



AIR.GO 1.0 BAG DROP

DESIGN: SARA CLEMENT (2014)

Air.Go 1.0 is an innovative self-service bag drop solution. Not two airports have the same needs, and Air.Go 1.0 is designed as a modular system for easy customisation and integration.

Air.Go 1.0 is installed against a wall which results in a very small footprint in the check-in area.

The Air.Go series is characterised by a minimalistic and elegant design with no distracting elements; functionally as well as aesthetically. The gently curved front gives a welcoming appearance with an ergonomically correctly angled screen and space for passengers to get close to the screen for reading and touching.

MATERIALS

Front: Powder coated steel [all colours available, can be covered in foil with graphics]

Sides: Brushed stainless steel

PARTNER



MARCUS PEDERSEN 9

© Marcus Pedersen 2015





TAG-O-MAT BAG TAG KIOSK

DESIGN: SARA CLEMENT (2015)

A KIOSK FOR QUICK BAG TAGGING

Tag-O-Mat is a kiosk for quick and easy bag tagging for passengers who have already checked in at their smartphone or computer before arriving at the airport. It is more simple to use than traditional check-in kiosks; the passenger simply scans his boarding pass and print the bag tag(s). The hardware solution (scanners and printers) can be customised to fit the airport's needs.

The elegant and user-friendly design matches our Air.Go bag drop series, and when installed together they ensure a consistent design line throughout the check-in area.

It is possible to integrate storage space for bag tag rolls and a waste bin for e.g. paper from bag tags.

MATERIALS

Front: Powder coated steel (all colours available, can be covered in foil with graphics)

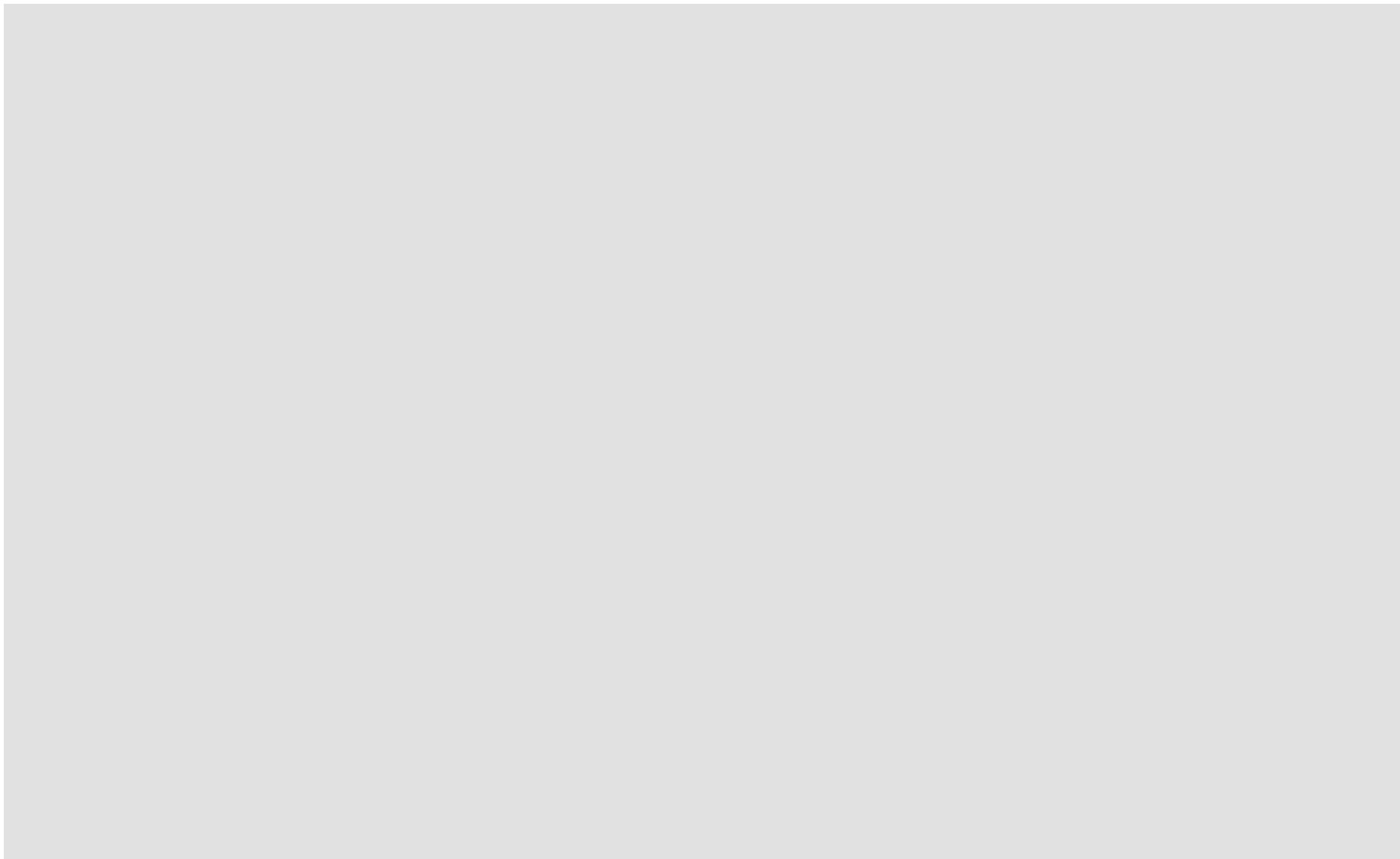
Sides: Brushed stainless steel

PARTNER



MARCUS PEDERSEN 11

© Marcus Pedersen 2015





SECURITY CHECK- POINTS

MARCUS PEDERSEN 13

© Marcus Pedersen 2015





iLane SECURITY CHECKPOINT

DESIGN (CLADDING): SARA CLEMENT (2015)

PROVEN TECHNOLOGY - NEW DESIGN

In cooperation with Smiths Detection, we have developed a new cladding design for the iLane security checkpoint. The airport gets the same, proven technology that is installed in many airports worldwide, but the passengers and staff will meet a new and modern design.

The design focuses on horizontal lines in order to emphasize the flow, and it has gently rounded corners and edges for a friendly appearance. At the same time, it is durable and easy to maintain. It can be customised in terms of colours and materials on the side panels, dimensions, integration of LED light etc.

MATERIALS

Table tops and -edges: Brushed stainless steel

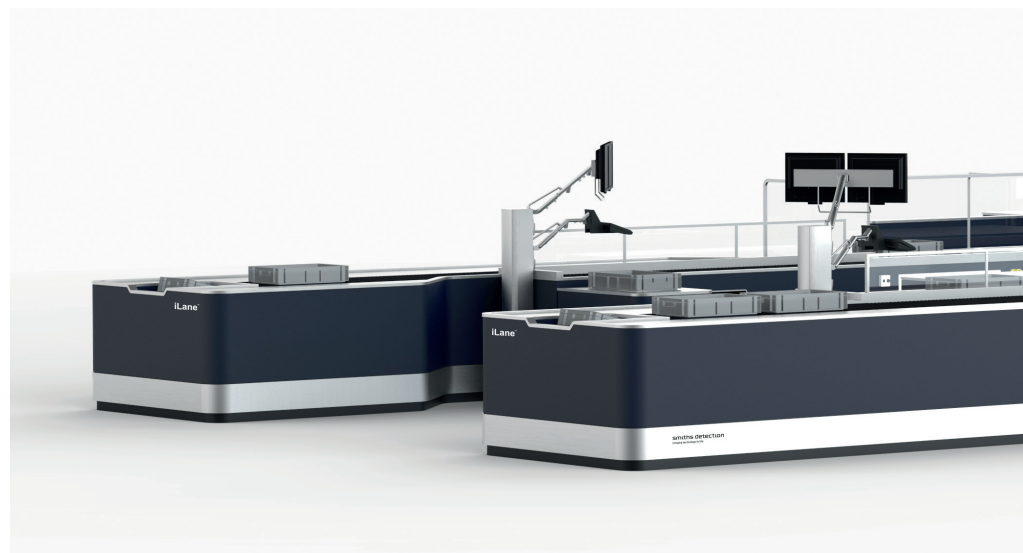
Side panels: Plates covered with e.g. linoleum, laminate or veneer (many colours and surface finishes available)

Foot panels: Brushed stainless steel

Socket: Powder coated steel (black)

PARTNER

smiths detection
bringing technology to life



MARCUS PEDERSEN 15

© Marcus Pedersen 2015





FURNI- TURE & ACCES- SORIES

MARCUS PEDERSEN 17

© Marcus Pedersen 2015







SYMFONI BEAT SEATING

DESIGN: RASMUS FASTING & JULIE THORSØ HANSEN (2015)

THE SYMFONI SERIES

Symfoni Beat Seating creates notable, dynamic, and playful setups for harmonious and characteristic environments. The series consists of three different shells mounted on a shared base, with the optional addition of a table. The curved shell is comfortable, and it is possible to integrate power outlets for passengers to charge their laptops or smartphones while waiting in the airport. Addition of armrests is possible.

Three or four units can be mounted per base, which comes in linear and curved varieties. Straight lines uses the available space efficiently yet retains a dynamic expression, while groups of curved bases create smaller, more intimate spaces.

MATERIALS

Seat: Shape pressed European beech with cover veneer in ash, walnut, oak or beech (natural or stained in any colour)

Upholstery: Any fabric or leather

Base: Powder coated steel (any colour)

Table top: Compact laminate, linoleum, or laminate with edges in black ABS



MARCUS PEDERSEN 19

© Marcus Pedersen 2015





MP01 GATE SEATING

DESIGN: RASMUS FASTING & JULIE THORSØ HANSEN (2012)

ELEGANT BEAM SEATING

MP01 Gate Seating is an elegant seating solution for gates and waiting areas. With integrated power outlets passengers can charge their laptops or smartphones while waiting. Armrests are available upon request, and the seats are easy to replace or change to MP01 Bench if needs change over time.

The MP01-series is designed with the vision to create an elegant and timeless furniture series where all assemblies, joints and cablings are hidden in a modular system. The furniture series is designed for the contemporary airport or other public space where maintenance, resilience and comfort are important features.

MATERIALS

Seat: Moulded MDI based foam [2-step process]

Upholstery: Any fabric or leather

Base: Aluminum (85% recycled)

Table top: Compact laminate with black ABS edges

Base for table top: Powder coated steel



MARCUS PEDERSEN 21

© Marcus Pedersen 2015





MP01 BENCH

DESIGN: RASMUS FASTING & JULIE THORSØ HANSEN (2012)

COMFORTABLE BENCH FOR WAITING AREAS

MP01 Bench combines elegance with a soft and comfortable seat. It is ideal to use in transit areas – alone or in combination with MP01 Gate Seating. The design is minimalistic and clean, yet soft and inviting in its appearance.

The base can be used for MP01 Gate Seating if needs change over time.

The MP01-series is designed with the vision to create an elegant and timeless furniture series where all assemblies, joints and cablings are hidden in a modular system. The furniture series is designed for the contemporary airport or other public space where maintenance, resilience and comfort are important features.

MATERIALS

Seat: Foam

Upholstery: Any fabric or leather

Base: Aluminum (85% recycled)



MARCUS PEDERSEN 23

© Marcus Pedersen 2015





MP01 HIGH TABLE

DESIGN: RASMUS FASTING & JULIE THORSØ HANSEN (2012)

ELEGANT HIGH TABLE WITH POWER OUTLETS

MP01 High Table is a unique table with a lightweight expression that is suitable for gates, lounges and other waiting areas. The table can e.g. be used for a short coffee break or as a workplace for the businessman, and with the integrated power outlets passengers can charge their smartphones or tablets while waiting.

The MP01-series is designed with the vision to create an elegant and timeless furniture series where all assemblies, joints and cabling are hidden in a modular system. The furniture series is designed for the contemporary airport or other public space where maintenance, resilience and comfort are important features.

MATERIALS

Base: Aluminum (85% recycled)

Table top: Compact laminate with black ABS edges

Base for table top: Powder coated steel



MARCUS PEDERSEN 25

© Marcus Pedersen 2015





MP01 LOUNGE CHAIR

DESIGN: RASMUS FASTING & JULIE THORSØ HANSEN (2012)

A MODERN LOUNGE CHAIR

MP01 Lounge Chair combines a minimalistic and lightweight expression with a relaxed and reclined seating comfort with a unique signature in the chair's profile. The profile of the seat matches MP01 Gate Seating, which ensures a consistent style throughout the airport, while the gently curved, wooden frame gives the chair its own, unique signature.

The chair is ideal for lounges and waiting areas, and sets the scene for both informal meetings, individual work time and relaxation.

MATERIALS

Seat: Moulded MDI based foam (2-step process)

Upholstery: Any fabric or leather

Base: Aluminum (85% recycled)



MARCUS PEDERSEN 27

© Marcus Pedersen 2015





A110 WASTE BIN

DESIGN: SARA CLEMENT (2014)

WASTE BIN FOR SOURCE SEPARATION

A110 is an elegant and functional waste bin for source separation. It can be placed alone or in groups and is developed with input from cleaning staff. It is easy to clean, and the staff avoid daily, heavy lifting because top and front can be opened when changing the garbage bag. The waste bins can be linked together and are easy to take apart during cleaning.

The design is welcoming, friendly, and easy to understand for the user. Icons and openings for all waste sources are available, and the slight decline of the top and the front makes it difficult to leave garbage on top of the lid.

If the waste bin should be lockable, it is possible to integrate a lock or an NFC reader.

MATERIALS

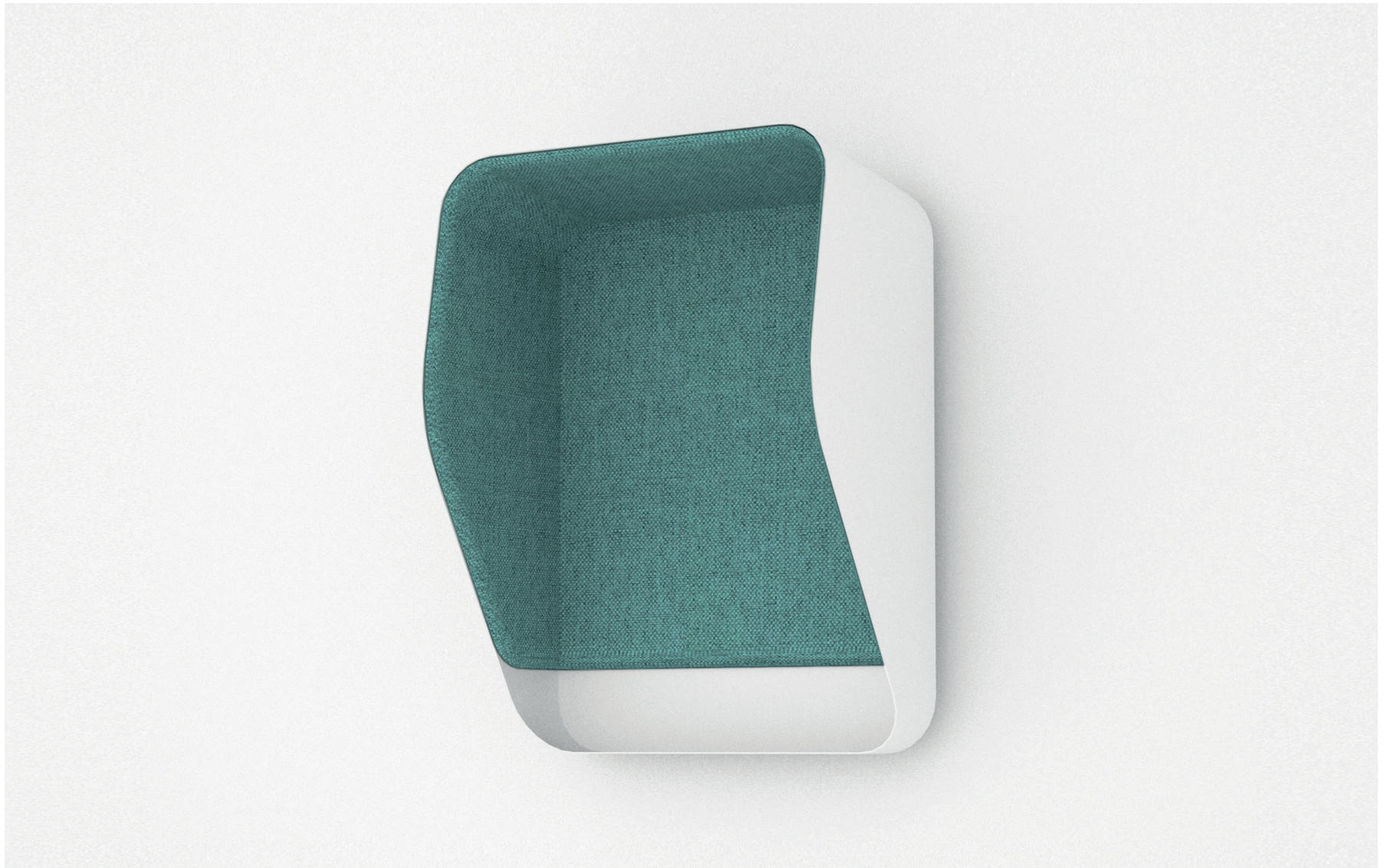
Top and front: Powder coated steel (any colour)

Body: Brushed stainless steel



MARCUS PEDERSEN 29

© Marcus Pedersen 2015





IN SITE PHONE BOOTH

DESIGN: RASMUS FASTING & JULIE THORSØ HANSEN (2014)

AN ACOUSTIC PHONE BOOTH

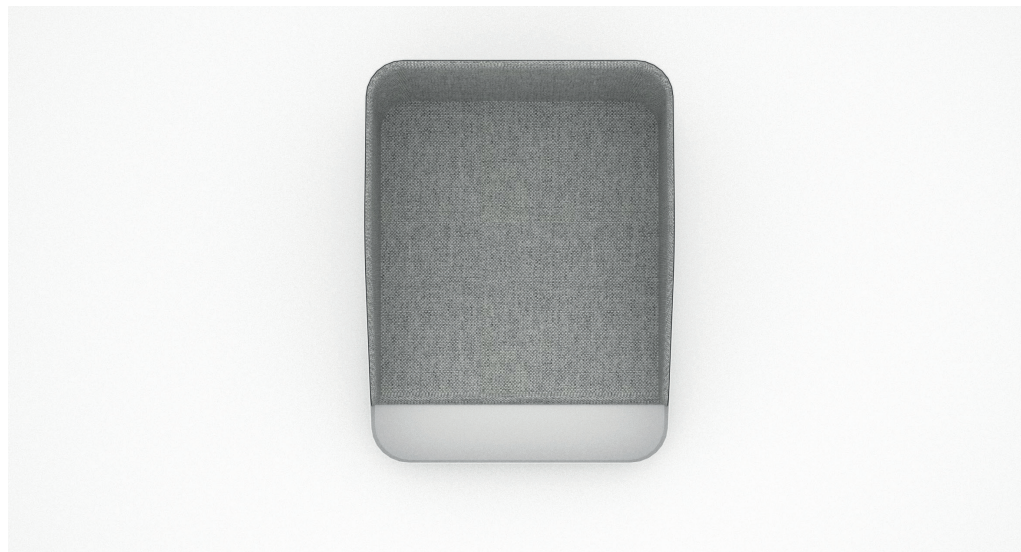
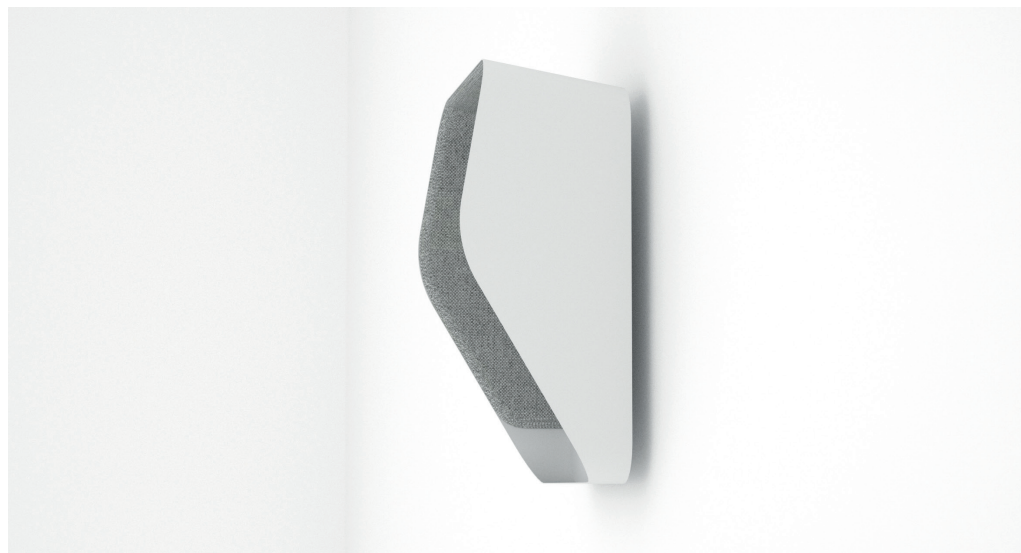
In Site is an acoustic phone booth for quiet phone conversations in busy spaces. It is designed to create a private and peaceful space, absorbing noise from the surrounding, hectic setting. The design is light and rounded to create an inviting opening towards the users.

In Site can be placed in any environment due to the simple design and the possibilities of multiple colours of the upholstery.

MATERIALS

Outside: Aluminum

Inside: Noise absorbing material upholstered with hardwearing and a cleanable fabric (any colour)



MARCUS PEDERSEN 31

© Marcus Pedersen 2015



MARCUS PEDERSEN

www.marcuspedersen.dk

